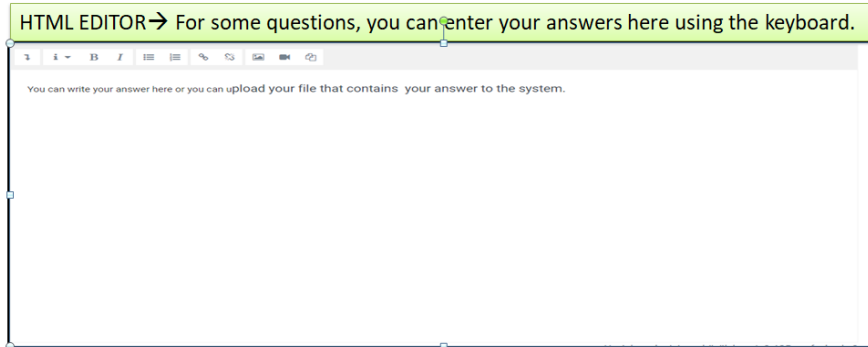
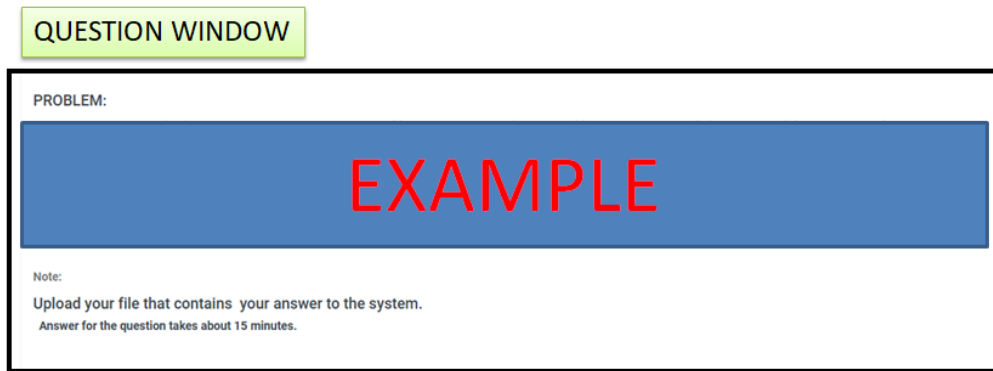


1. There are 5 questions in the midterm exam. The exam duration is 75 minutes. The exam will be in written format.
2. The questions are displayed on the screen sequentially. There is no return to the question you answered or passed.
3. It is strictly forbidden to share the exam related questions on the internet during or after the exam or to use it for any other purpose.
4. For some questions, you need to use answer sheet and upload its photo to the system. You can upload your answers to the system either by using the HTML editor or by taking a photo of your answer sheet. The extension of the file that you will upload should be gif or jpeg or BMP. If the file is not opened it will be your responsibility.

EXAMPLE FOR EXAM SCREEN



Click to upload your file or to upload file drag and drop it

HOW TO TRANSFER YOUR FILE FROM MOBILE PHONE TO COMPUTER

There are different ways to upload the photo of your exam paper from the mobile phone to the system. Three of them are described below.

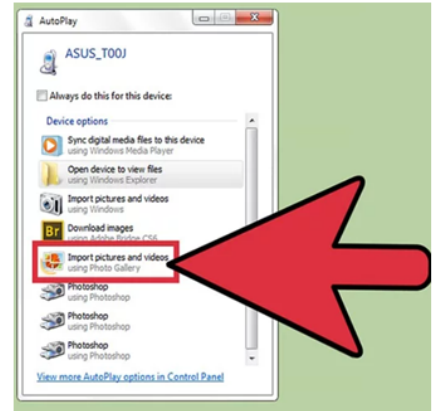
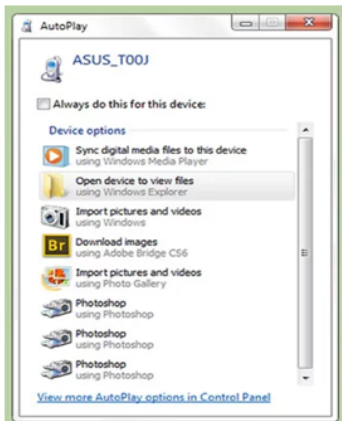
Take photo of your exam paper



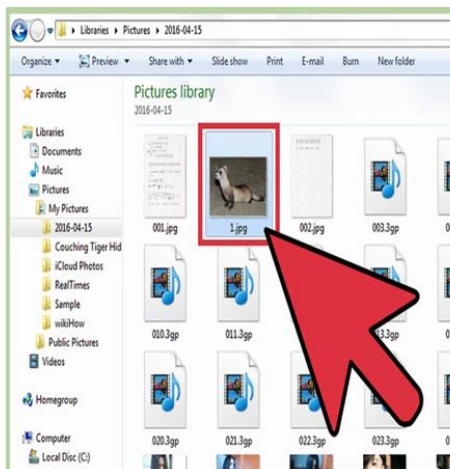
1. Connecting with a USB Cord

Plug your device into your computer using a USB cord. This will usually prompt a window to appear on your computer where you can sync the files from your phone onto your computer. If you are on a Windows computer, you may need to open the Photos app. If you are on a Mac, the iTunes will generally open

Select **"Import."** You will be asked if you would like to import all of your files and photos or to select from those saved on your phone.



Choose exam photo and upload it to system.

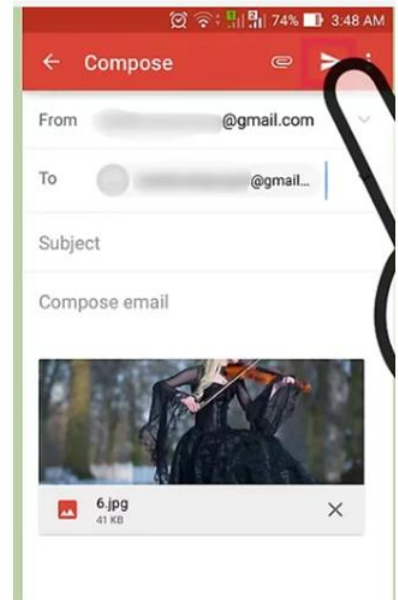
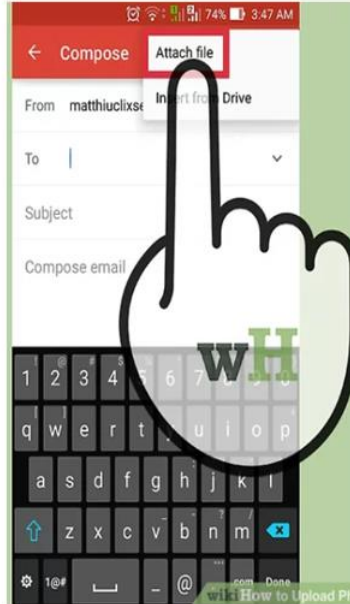
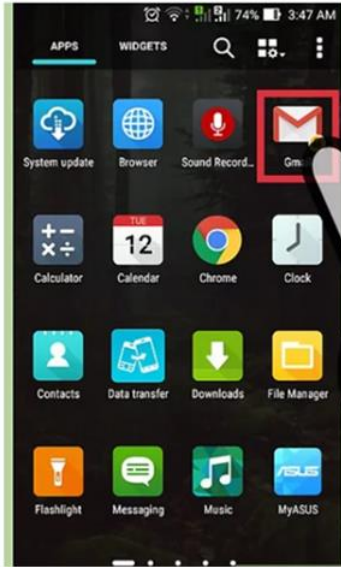


2.E-mailing Your Photos

One of the simplest ways to upload your photo to your computer is by simply e-mailing them to yourself from your smartphone

Attach your photos. Create an e-mail on your phone and attach the files you wish to upload.

Send the e-mail to yourself and upload the photo to the system



3. Transferring Via Bluetooth

Turn on your Bluetooth.

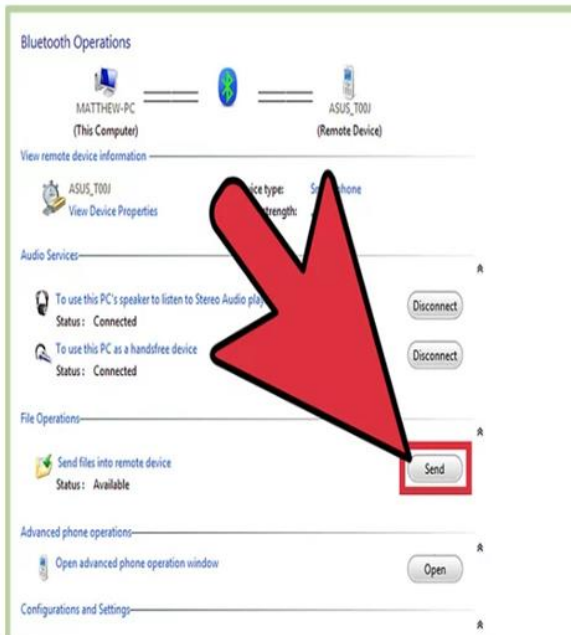


Select the Bluetooth icon on your computer. This is usually found in the upper right-hand corner of a Mac or the lower-right hand corner on Windows

Connect to your Phone. Your cell phone should be listed as an available device in the Bluetooth File Transfer Window. If it is not, double-check that you have enabled Bluetooth



Select "Send File" on your computer. You will find this in a drop down menu after you select your phone.



Choose your photos. Once you have selected your device, find the photos you wish to update and select "Next." This will prompt your photo to be uploaded to your computer

